

TurmfalkeSuites

Andermatt, CH



Project details

Client	Swiss Property AG
Architecture	Swiss Property AG
Project type	Residential construction apartment building
Construction type	Wood element construction
Services	Timber construction
Construction	2020-2021
Locality	Andermatt
Country	Switzerland

Elegant holiday apartments in timber construction

The two timber 'TurmfalkeSuites' buildings include 50 accommodation units, a wellness and fitness area and an indoor golf facility. They are located in the new Andermatt Reuss holiday village, which is part of the flagship 'Andermatt Swiss Alps' tourism project. Blumer Lehmann was responsible for the timber construction of the accommodation buildings, including the support structure and facade cladding.

Despite the large scale of the two timber apartment buildings, the elegant TurmfalkeSuites still have a distinct chalet feel. All 47 of the studios and apartments have a high-quality design featuring lots of wood.

Our expertise in timber construction was called upon from an early stage. For structural reasons, the load-bearing internal walls were constructed using cross-laminated timber. Furthermore, as they are located at an altitude of 1,444 m above sea level, the buildings required special construction features, namely a specially customised rear-ventilated facade and huge rafters with a diameter of 40 cm to handle heavy snowfall.

Both apartment buildings are designed as prefabricated timber structures from the second floor upwards. The overall look of the facade, with its pressure-treated shuttering, is defined by the interplay of the upright, horizontal and vertical spruce slats.

Specific Contact



Marco Gemperle

Sales Residential Construction | Timber Construction | Switzerland

T +41 71 388 58 55

marco.gemperle@blumer-lehmann.com

TurmfalkeSuites

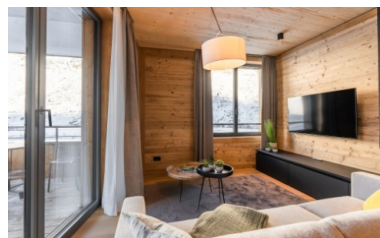
Andermatt, CH



The minimalist and simple style of the interior finishing lends the apartment a touch of elegance.



The interior of the TurmfalkeSuites also creates a cosy chalet feel.



Despite their size, the two timber chalet-style buildings create a cosy, homey atmosphere.

Comfort and architecture tastefully combined – the walls, ceilings and floors are all made of timber.

TurmfalkeSuites

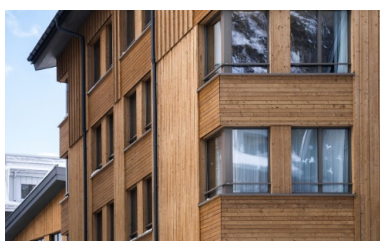
Andermatt, CH



The residents of the TurmfalkeSuites enjoy wellness in style in the on-site spa.



The walls in the corridor, made of rustic wood, go together perfectly with the floor of light grey stone slabs.



Protruding, horizontal and vertical spruce slats add a playful element to the design of the timber facade.