

Recycling of an apartment building

Rorschach, CH



Project details

| | |
|-------------------|--|
| Client | Private |
| Architecture | Baubüro in situ AG |
| Project type | Residential construction apartment building |
| Construction type | Wood element construction |
| Services | Joint GC building shell |
| Construction | 2020 |
| Locality | Rorschach |
| Country | Switzerland |

Retain, reuse, reinterpret

Client, planners and tradespeople worked together in close and constructive exchange to convert this apartment building, predominantly using the existing structure. Blumer Lehmann was responsible for this 'recycling conversion' as joint general contractor.

The architects Baubüro in situ have described this conversion project as a TraumRecyclingHaus (dream recycled house). The three-family dwelling built in 1914 was converted into a modern apartment building in a process akin to a transformation. An unusual and challenging aspect of the conversion was that – wherever possible – existing materials were used, concealed features were uncovered, and previously untapped potential was reinterpreted. Our mandate as joint GC included the addition of a steel external staircase with timber arcades. We also extended the flooring in the old stairwell, installed new interior walls and ceiling cladding, and constructed a new dormer.

The addition of this dormer created more living space on the top floor, resulting in a self-contained two-bedroom loft apartment. The three-bedroom apartment on the ground floor and two-bedroom apartment on the first floor were also given a fresh new look, with new and existing structural elements brought together in unity.

Specific Contact



Peter Holenstein

Sales Conversion | Renovation |
Staircases | Timber Construction |
Switzerland

T +41 71 388 58 46

peter.holenstein@blumer-lehmann.com

Recycling of an apartment building

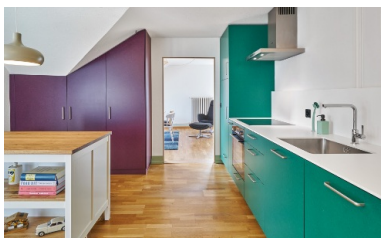
Rorschach, CH



Existing elements are preserved and complemented with modern interior features. The living spaces look refreshed and updated following the recycling conversion.



The new and spacious timber arcades elevate the apartments even further and provide plenty of outside space.



Old and new are the perfect combination and create harmonious living spaces.

Structural changes and modifications of the previous layout, where considered useful, were carried out and deliberately left visible

Recycling of an apartment building

Rorschach, CH



Additional living space in the warmer months: the new timber arcade.



A new dormer has transformed the attic rooms into an apartment with a spacious terrace.



The interior features are thoughtfully picked out to give the bedroom its elegant feel.